

MEDICAL CASE STUDY

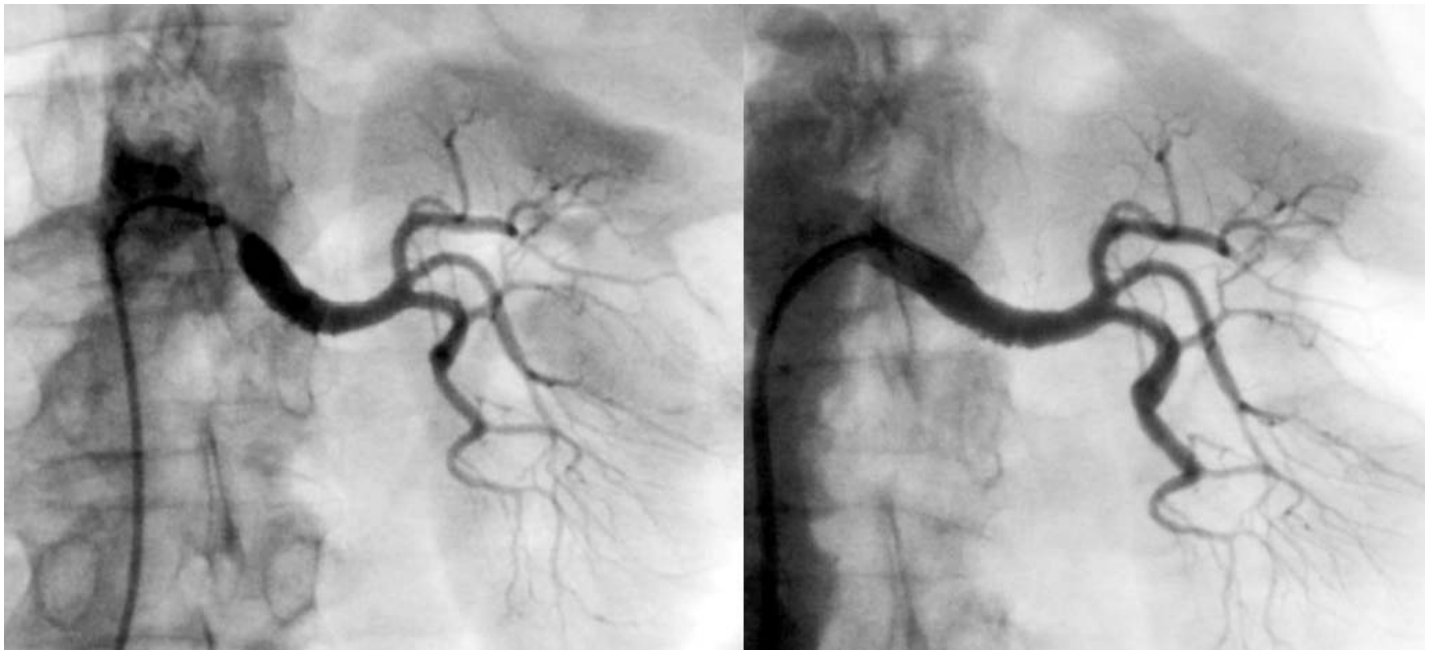
Hugo Quintana, MD

A 72-year-old man with a history of hypertension, diabetes, and coronary artery disease, was admitted to the hospital with unstable angina. His blood pressure had been difficult to control despite therapy with four antihypertensive medications (diltiazem,

hydrochlorothiazide, metoprolol, and losartan).

Creatinine clearance was 65 mL/min.

Selective renal angiography was performed at the time of the coronary angiogram. The angiographic findings are shown below.



Questions:

1. What is the diagnosis?
2. In which patients should the diagnosis be suspected?
3. What other vascular studies are available to make this diagnosis?
4. What are the treatment options?
5. What are the clinical outcomes of renal artery revascularization therapy?

Answers on page 42